



AK CHOUDHARY METALS PVT. LTD
CHOUDHARY GROUP OF COMPANIES



**MANUFACTURERS & EXPORTERS OF
PIPE FITTINGS, FLANGES, HUBS & CLAMPS**





COMPANY PROFILE

AK Choudhary Metals Inc., established in 2009 by Ramesh Choudhary, has emerged as a global leader in manufacturing flanges, fittings, and piping solutions. Backed by over 40 years of experience in the metal business and 15+ years in manufacturing, the company is renowned for its unwavering commitment to quality, innovation, and reliability. This dedication to technological excellence and customer satisfaction has garnered the trust of industries worldwide, enabling AK Choudhary Metals to deliver superior products tailored to the needs of sectors such as petroleum, petrochemicals, water conservancy, and steel.

Under the visionary leadership of Mr. A.D. Choudhary, Chairman of the Metal and Steel Merchant Association, the company has become a pioneer in the metal manufacturing industry. Utilizing advanced techniques like induction bending, hot and cold elbow forming, and precision forging, AK Choudhary Metals ensures every product meets the highest standards of quality and performance. Guided by this innovation-driven approach, the company continues to set benchmarks in efficiency, innovation, and customer-centric solutions.

OUR MISSION

At AK Choudhary Metals Inc., we deliver innovative, high-quality metal solutions designed for durability and precision. Committed to excellence and customer trust, we serve diverse industries with advanced engineering and reliable products. Our focus on innovation and industry leadership ensures exceptional value, fostering long-lasting relationships and exceeding client expectations.

OUR OFFICE AND MANUFACTURING UNIT

AK Choudhary Metals operates a state-of-the-art facility in Gujarat, with its head office in Mumbai. We specialize in precision-engineered flanges, butt-weld fittings, forged fittings, hubs, and clamps, delivering reliable, durable solutions for diverse industries.



Special Grades Material We Deal In:

NORSOK M630 & NORSOK M650

Stainless Steel:

304/304L, 316/316L, 310S, 317L, 321, 347, 904L
Duplex, Super Duplex, P11, etc.

Carbon & Alloy Steel:

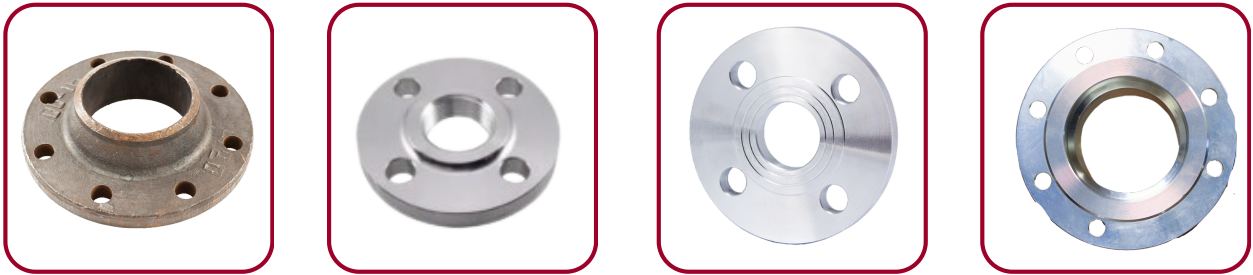
AISI 4130, WPL6, LF2, A105 WPB, A106, WPHY-
42-46-52-65-70, Duplex, Super Duplex, P11, etc.



TABLE OF CONTENTS

FLANGES.....	01
ANSI B16.5 CLASS 150 FORGED FLANGES.....	01
ANSI B16.5 CLASS 300 FORGED FLANGES.....	01
FORGED FITTINGS.....	02
ANSI B16.11.bs 3799:1974 FORGED SCREWED FITTINGS.....	02
BUTT WELD FITTINGS.....	03
BUTT WELDING FITTING DIMENSIONAL STANDARD ANSI B-16.9, B-16.28 & MS SS P43.....	03
FERRULE FITTINGS.....	04
FERRULE FITTING DIMENSIONAL STANDARD ANSI B1.20.1 (NTP) & INDUSTRIAL SPECIFICATIONS.....	04
HUBS & CLAMPS.....	05
FLANGE PRODUCTION PROCESS.....	06
PIPE FITTING PRODUCTION PROCESS.....	06

FLANGES

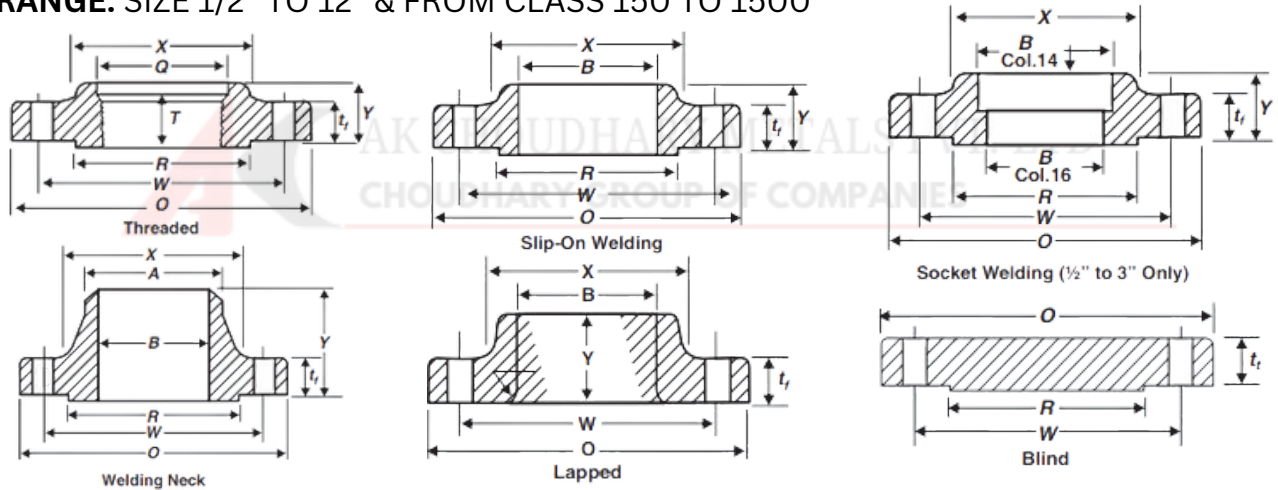


TYPE: WELDNECK, SLIPON, SOCKETWELD, LAPJOINT, THREADED, REDUCING, ORIFICE, AND SPECTACLE BLIND

SPECIFICATIONS: ASTM, ASME, DIN, JIS, BS & IS

MATERIAL: CARBON STEEL, STAINLESS STEEL, ALLOY STEEL, DUPLEX, SUPER DUPLEX, NICKEL BASE ALLOY LIKE HAST ALLOY, INCONEL, ETC.

RANGE: SIZE 1/2" TO 12" & FROM CLASS 150 TO 1500



ANSI B16.5 CLASS 150 FORGED FLANGES - ANSI B16.5 CLASS 300 FORGED FLANGES

Nom. Pipe Size	O	T	R	X	#/Dia of Holes	Bolt Circle Dia	B	B1	B2	H	L	L1	r	D	Thr
1/2"	3.50	0.38	0.44	1.38	4-0.62	2.38	0.88	0.62	0.90	0.84	0.56	1.81	0.12	0.38	0.62
3/4"	3.88	0.44	0.50	1.69	4-0.62	2.75	1.00	0.69	1.00	0.88	0.62	2.00	0.12	0.44	0.69
1"	4.25	0.50	0.56	2.00	4-0.62	3.12	1.36	1.05	1.38	1.00	0.69	2.12	0.19	0.50	0.75
1 1/4"	4.62	0.50	0.62	2.50	4-0.62	3.50	1.38	1.06	1.50	1.12	0.75	2.38	0.19	0.50	0.88
1 1/2"	5.00	0.62	0.69	2.88	4-0.75	3.88	1.95	1.61	2.00	1.31	0.88	2.81	0.19	0.62	1.00
2"	6.00	0.75	0.81	3.50	4-0.75	4.75	2.62	2.29	2.62	1.50	1.00	3.12	0.25	0.75	1.19
2 1/2"	7.00	0.81	0.88	4.12	4-0.75	5.50	2.94	2.47	2.97	1.88	1.12	3.94	0.25	0.81	1.38
3"	7.50	0.88	0.94	5.00	4-0.75	6.00	3.57	3.07	3.62	2.00	1.25	4.12	0.38	0.88	1.50

FORGED FITTINGS

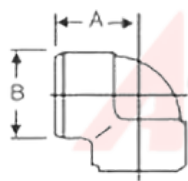


TYPE: OLET, WELDOLET, SOCKOLET, COUPLING, UNION, BUSHING, ELBOW, TEE, INSERT, SWAGE NIPPLE, NIPPLE, PLUG, CAP & CROSS

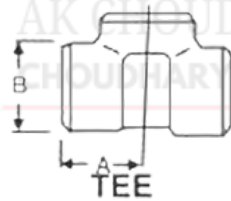
SPECIFICATIONS: ASTM, ASME, DIN, JIS, BS & IS

MATERIAL: CARBON STEEL, STAINLESS STEEL, ALLOY STEEL, DUPLEX, SUPER DUPLEX, NICKEL BASE ALLOY LIKE HAST ALLOY, INCONEL, ETC.

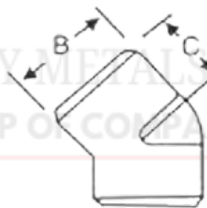
RANGE: SIZE 1/2" TO 4" & FROM CLASS 3000 TO 9000



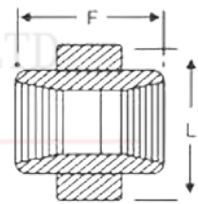
90° ELBOWS



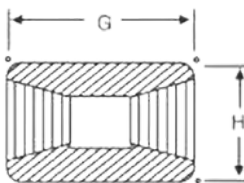
TEE



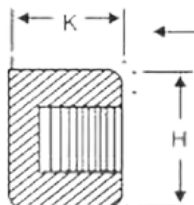
45° ELBOW



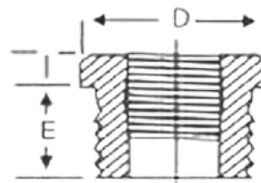
UNION



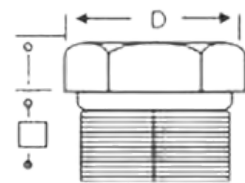
COUPLING



PIPE CAP



BUSHING



HEX HEAD PLUG

ASME B16.11 FORGED SCREWED FITTINGS

NOM BORE	PIPE O.D.	3000 L.B.S.						COMMON FACTORS						6000 L.B.S.					
		A	B	C	G	H	K	D	E	F	I	J	L	A	B	C	G	H	K
1/8"	10.3	21	22	17	32	16	19	11	10	40	-	6	-	25	25	19	32	22	-
1/4"	13.7	25	25	19	35	19	25	16	11	43	3	6	32	29	33	22	35	25	27
3/8"	17.2	29	33	22	38	22	25	17.5	13	48	4	8	38	33	38	25	38	32	27
1/2"	21.3	33	38	25	48	29	32	22	15	51	5	8	46	38	46	29	48	38	33
3/4"	26.7	38	46	29	51	35	37	27	16	57	6	10	51	44	56	33	51	44	38
1"	33.4	44	56	33	60	44	41	35	19	64	6	10	60	51	62	35	60	57	43
1 1/4"	42.2	51	62	35	67	57	44	44.5	21	70	7	14	72	60	75	43	67	64	46
1 1/2"	48.3	60	75	43	79	64	44	51	21	79	8	16	80	64	84	44	79	76	48
2"	60.3	64	84	45	86	76	48	63.5	22	88	9	17	94	83	102	52	86	92	51
2 1/2"	73.02	83	102	52	92	92	60	76	27	118	10	21	122	95	121	64	92	108	64
3"	89.0	95	121	64	108	108	65	89	29	121	10	25	140	106	146	79	108	127	68
4"	114.5	114	152	79	121	140	68	117.5	32	150	13	25	180	114	152	79	121	159	75

BUTT WELD FITTINGS

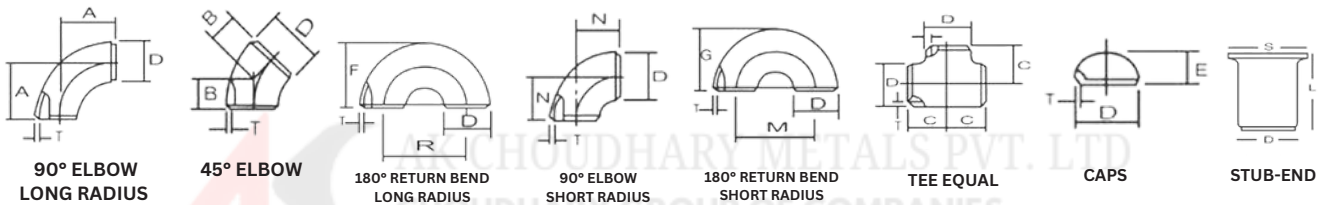


TYPE: ELBOW, TEE, REDUCER, CAP, STUB-END, BARREL NIPPLE & CROSS

SPECIFICATIONS: ASTM, ASME, DIN, JIS, BS & IS

MATERIAL: CARBON STEEL, STAINLESS STEEL, ALLOY STEEL, DUPLEX, SUPER DUPLEX, NICKEL BASE ALLOY LIKE HAST ALLOY, INCONEL, ETC.

RANGE: 1/2" NPS TO 12NPS & FROM SCH 5 TO SCH 160/XX



BUTT WELDING FITTING DIMENSIONAL STANDARD ANSI B-16.9, B-16.28 & MS SS P43

Nominal Pipe Size		Nominal Wall Thickness																		Nominal Pipe Size		
A	B	ASME	JIS	DIN	JIS(1)	DIN(2)	SCH10	SCH20	SCH30	STD	SCH40	SCH60	XS	SCH80	SCH100	SCH120	SCH140	SCH160	XXS	A	B	
15	1/2"	21.3	21.7	21.3	2.8	2.0	2.11	-	2.41	2.77	2.77	-	3.73	3.73	-	-	-	-	4.78	7.47	15	1/2"
20	3/4"	26.7	27.2	26.9	2.8	2.3	2.11	-	2.41	2.87	2.87	-	3.91	3.91	-	-	-	5.56	7.82	20	3/4"	
25	1"	33.4	34.0	33.7	3.2	2.6	2.77	-	2.90	3.38	3.38	-	4.55	4.55	-	-	-	6.35	9.09	25	1"	
32	1 1/4"	42.2	42.7	42.4	3.5	2.6	2.77	-	2.97	3.56	3.56	-	4.85	4.85	-	-	-	6.35	9.70	32	1 1/4"	
40	1 1/2"	48.3	48.6	48.3	3.5	2.9	2.77	-	3.18	3.68	3.68	-	5.08	5.08	-	-	-	7.14	10.15	40	1 1/2"	
50	2"	60.3	60.5	60.3	3.8	2.9	2.77	-	3.18	3.91	3.91	-	5.54	5.54	-	-	-	8.74	11.07	50	2"	
65	2 1/2"	73.0	76.3	76.1	4.2	2.9	3.05	-	4.78	5.16	5.16	-	7.01	7.01	-	-	-	9.53	14.02	65	2 1/2"	
80	3"	88.9	89.1	88.9	4.2	3.2	3.05	-	4.78	5.49	5.49	-	7.62	7.62	-	-	-	11.13	15.24	80	3"	
90	3 1/2"	101.6	101.6	-	4.2	-	3.05	-	4.78	5.74	5.74	-	8.08	8.08	-	-	-	-	-	90	3 1/2"	
100	4"	114.3	114.3	114.3	4.5	3.6	3.05	-	4.78	6.02	6.02	-	8.56	8.56	-	11.13	-	13.49	17.12	100	4"	
125	5"	141.3	139.8	139.7	4.5	4.0	3.40	-	-	6.55	6.55	-	9.53	9.53	-	12.70	-	15.99	19.05	125	5"	
150	6"	168.3	165.2	168.3	5.0	4.5	3.40	4.5	-	7.11	7.11	-	10.97	10.97	-	14.27	-	18.26	21.95	150	6"	
200	8"	219.1	216.3	219.1	5.8	6.3	3.76	6.35	7.04	8.18	8.18	10.31	12.70	12.70	15.09	18.26	20.62	23.01	22.23	200	8"	
250	10"	273.1	267.4	273.0	6.6	6.3	4.19	6.35	7.80	9.27	9.27	12.70	12.70	15.09	18.26	21.44	25.40	28.58	25.40	250	10"	
300	12"	323.9	318.5	323.9	6.9	7.1	4.57	6.35	8.38	9.53	10.31	14.27	12.70	17.48	21.44	25.40	28.58	33.32	25.40	300	12"	
350	14"	355.6	355.6	355.6	7.9	8.0	6.35	7.92	9.53	9.53	11.13	15.09	12.70	19.05	23.83	27.79	31.75	35.71	-	350	14"	
400	16"	406.4	406.4	406.4	7.9	8.8	6.35	7.92	9.53	9.53	12.70	16.66	12.70	21.44	26.19	30.96	36.53	40.49	-	400	16"	
450	18"	457.2	457.2	457.0	7.9	10.0	6.35	7.92	11.13	9.53	14.27	19.05	12.70	23.83	29.36	34.93	39.67	45.24	-	450	18"	
500	20"	508.0	508.0	508.0	7.9	11.0	6.35	9.53	12.70	9.53	15.09	20.62	12.70	26.19	32.54	38.10	44.45	50.01	-	500	20"	
550	22"	558.8	558.8	-	-	-	6.35	9.53	12.70	9.53	-	22.23	12.70	28.58	34.93	41.28	47.63	53.98	-	550	22"	
600	24"	609.6	609.6	610.0	-	12.5	6.35	9.53	14.27	9.53	17.48	24.61	12.70	30.96	38.89	46.02	52.37	59.54	-	600	24"	
650	26"	660.4	660.4	-	-	-	7.92	12.70	-	9.53	-	-	12.70	-	-	-	-	-	-	-	650	26"
700	28"	711.1	711.2	711.0	-	12.5	7.92	12.70	15.88	9.53	-	-	12.70	-	-	-	-	-	-	-	700	28"
750	30"	762.0	762.0	-	-	-	7.92	12.70	15.88	9.53	-	-	12.70	-	-	-	-	-	-	-	750	30"
800	32"	812.8	812.8	813.0	-	12.5	7.92	12.70	15.88	9.53	17.48	-	12.70	-	-	-	-	-	-	-	800	32"
850	34"	863.6	863.6	-	-	-	7.92	12.70	15.88	9.53	17.48	-	12.70	-	-	-	-	-	-	-	850	34"
900	36"	914.4	914.4	914.0	-	12.5	7.92	12.70	15.88	9.53	19.05	-	12.70	-	-	-	-	-	-	-	900	36"
950	38"	965.2	965.2	-	-	-	-	-	-	9.53	-	-	12.70	-	-	-	-	-	-	-	950	38"
1000	40"	1016.0	1016.0	1016.0	-	12.5	-	-	-	9.53	-	-	12.70	-	-	-	-	-	-	-	1000	40"
1050	42"	1066.8	1066.8	-	-	-	-	-	-	9.53	-	-	12.70	-	-	-	-	-	-	-	1050	42"
1100	44"	1117.6	1117.6	-	-	-	-	-	-	9.53	-	-	12.70	-	-	-	-	-	-	-	1100	44"
1150	46"	1168.4	1168.4	-	-	-	-	-	-	9.53	-	-	12.70	-	-	-	-	-	-	-	1150	46"
1200	48"	1219.2	1219.2	1220.0	-	-	-	-	-	9.53	-	-	12.70	-	-	-	-	-	-	-	1200	48"

FERULE FITTINGS

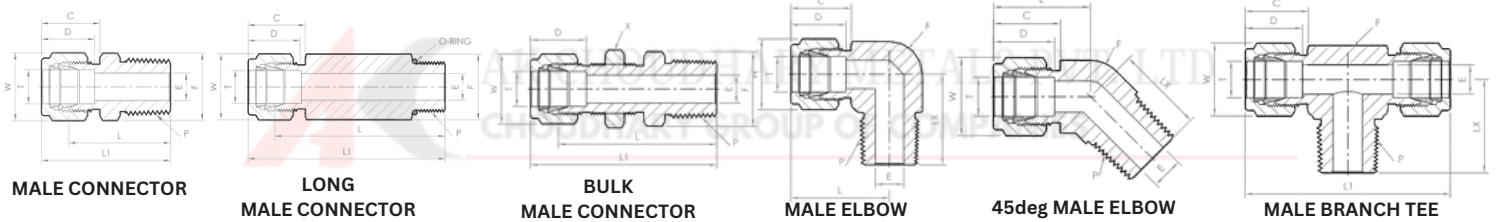


TYPE: UNION, MALE CONNECTOR, FEMALE CONNECTOR, ELBOW, TEE, REDUCER, CROSS, BULKHEAD, PLUG, CAP, COUPLING, BARREL NIPPLE

SPECIFICATIONS: ASTM, ASME, DIN, JIS, BS & IS

MATERIAL: CARBON STEEL, STAINLESS STEEL, ALLOY STEEL, DUPLEX, SUPER DUPLEX, NICKEL BASE ALLOY LIKE HAST ALLOY, INCONEL, ETC.

RANGE: 1/16" OD TO 2" OD & THREADED SIZE 1/8" NPT TO 2" NPT

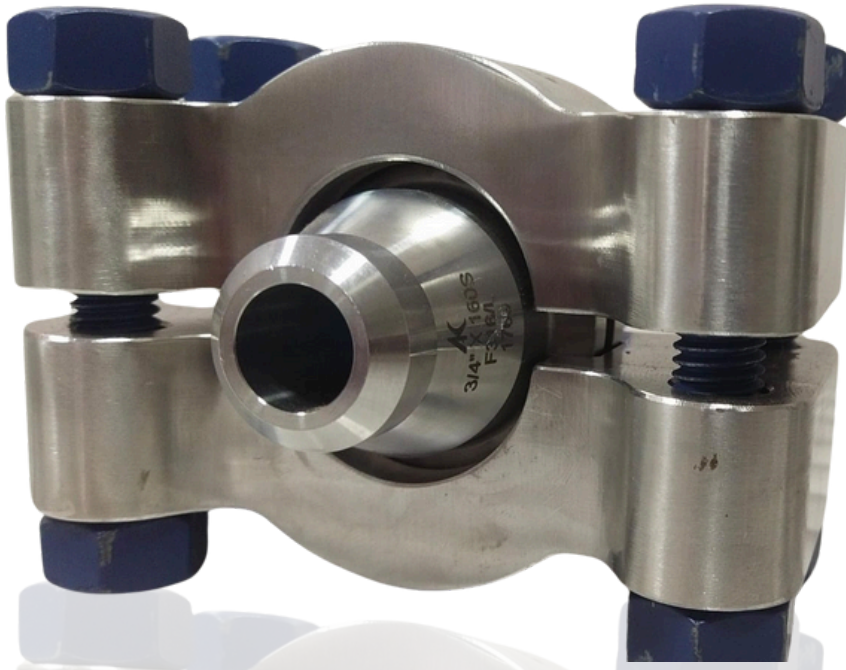


FERRULE FITTING DIMENSIONAL STANDARD ANSI B1.20.1 (NPT) & INDUSTRIAL SPECIFICATIONS

Nominal Tube Size (Inches)	Thread Size (NPT)	Ferrule Outer Diameter (Inches)	Ferrule Length (Inches)	Hex Size (Inches)	Tube Outer Diameter (Inches)
1/8"	1/8"-27 NPT	0.43	0.79	0.44	0.125
1/4"	1/4"-18 NPT	0.55	0.87	0.63	0.25
3/8"	3/8"-18 NPT	0.71	0.98	0.81	0.375
1/2"	1/2"-14 NPT	0.87	1.22	1.00	0.50
3/4"	3/4"-14 NPT	1.26	1.50	1.25	0.75
1"	1"-11.5 NPT	1.50	1.78	1.50	1.00
1 1/4"	1 1/4"-11.5 NPT	1.89	2.12	1.88	1.25
1 1/2"	1 1/2"-11.5 NPT	2.12	2.37	2.12	1.50
2"	2"-11.5 NPT	2.64	2.76	2.75	2.00

HUBS & CLAMPS

Hubs & Clamps are innovative pipe clamp connectors offering a lightweight, compact alternative to traditional flanges. It ensures superior joint integrity with a metal-to-metal seal and fewer bolts, simplifying installation and maintenance. Unlike flanges, it eliminates gasket reliance and withstands high pressure, bending, and axial loads without compromising seal performance.

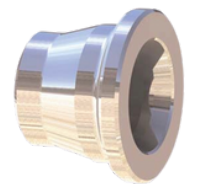


**INNOVATING THE FUTURE OF PIPE CONNECTIONS:
 LIGHTER, STRONGER, FASTER**



PROBLEMS WITH REGULAR FLANGE CONNECTORS:

- LEAKAGE RISKS
- BULKY DESIGN
- TIME CONSUMING INSTALLATION
- LIMITED STRENGTH
- FREQUENT MAINTAINANCE



BUTTWELD HUB



SEAL RING



CLAMP ASSEMBLY

SOLUTIONS OFFERED BY OUR PRODUCT:

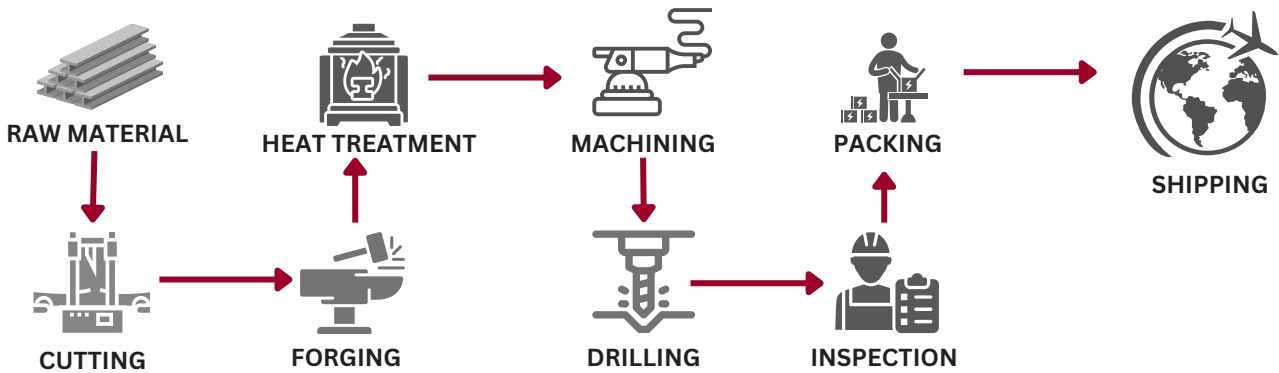
- LEAK PROOF SEAL
- COMPACT AND LIGHT WEIGHT
- EASY INSTALLATION
- ENHANCED STRENGTH
- LOW MAINTAINANCE



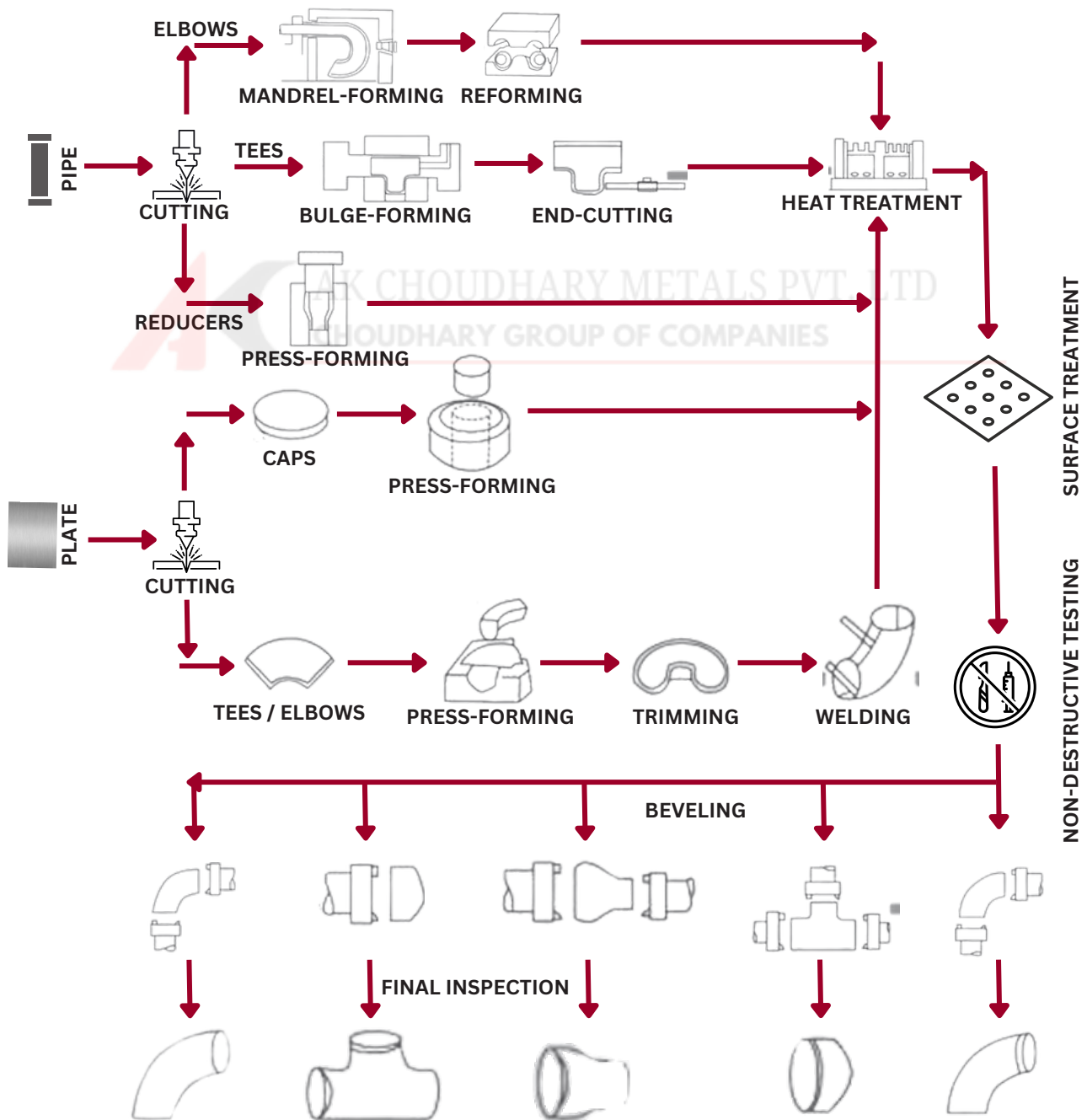
HUBS & CLAMPS

hub, clamp, and seal ring, working together to create a compact, leak-proof, and high-strength connection for superior performance in critical applications

FLANGE PRODUCTION PROCESS



PIPE FITTING PRODUCTION PROCESS



SUCCESSFULLY EXPORTED TO



OUR ESTEEMED CLIENTS

EagleBurgmann
a member of **EKK** and **FREUDENBERG**



SULZER



AK CHOUDHARY METALS PVT. LTD
CHOUDHARY GROUP OF COMPANIES

- Head Office:** Shop no. 7, Earth Darshan, 8th Khetwadi main road, Next to Maruti Temple, Mumbai 400 004
- Factory:** Plot No. 225/226, Nandasani Village, Ahmedabad Mehasana Highway, Dist. Mehsana, Gujarat- 382 705
- Forging Unit:** Plot No. J-4-C, Coal Depot, Fasbery Road, Krishna Hotel, Sewri (East), Mumbai - 400 015
- Branch Office:** 4-2-228, Old Bhoiguda, Mahakali Street, Secunderabad - 500 003
- Phone:** +91 9892004496 / +91 9182884291
- Phone:** +91 2266394121 / +91 66394506
- Email:** ramesh@choudharymetals.in
- Email:** choudharymetalcorp@gmail.com

